

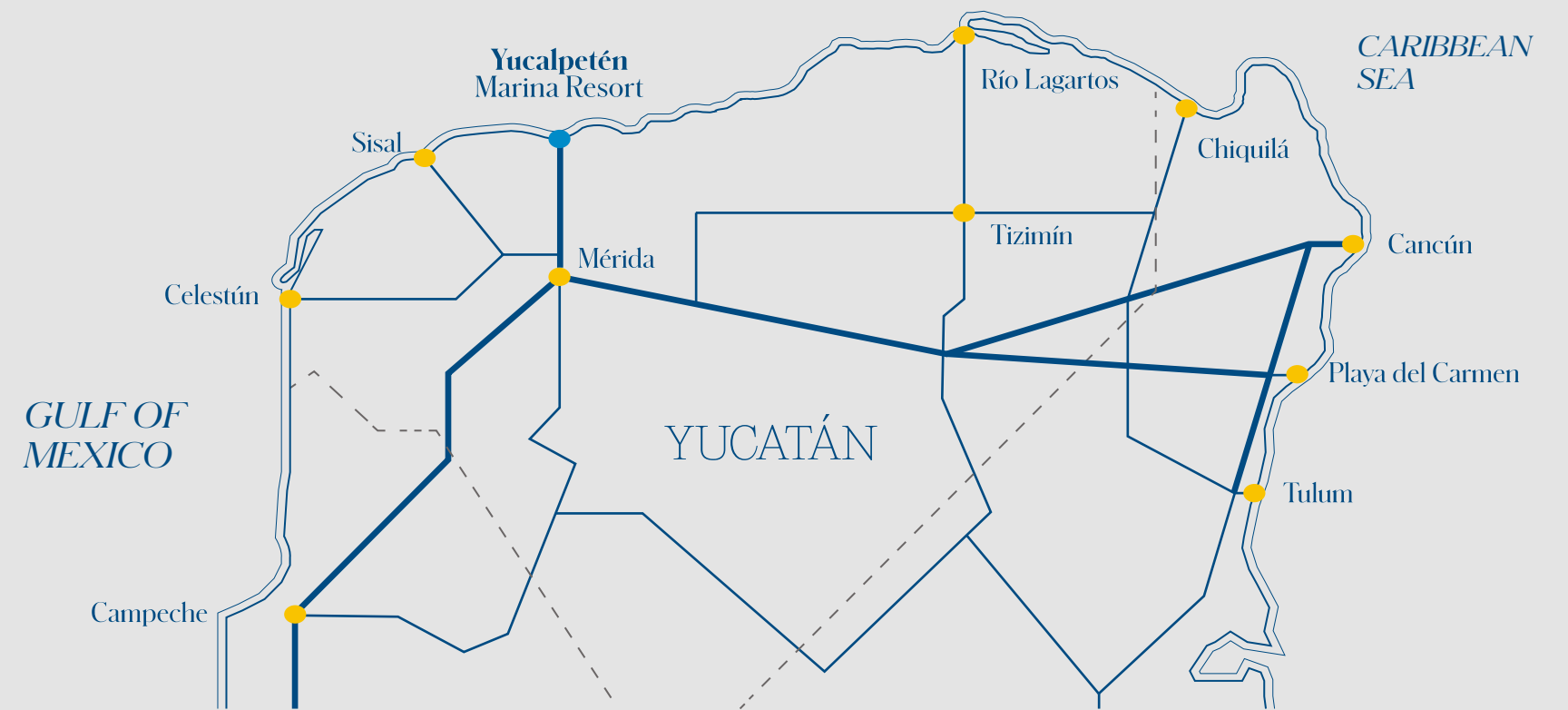
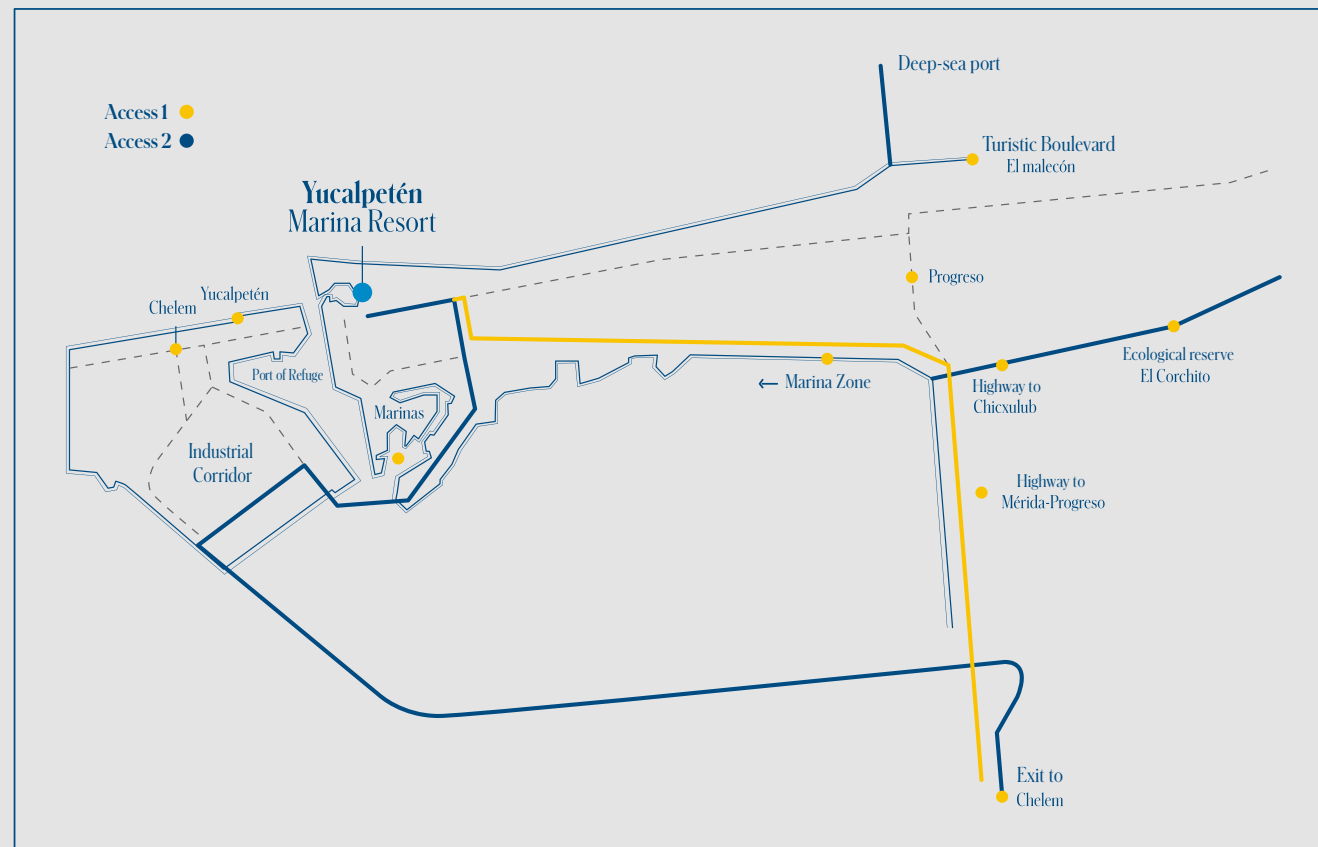


Yucalpetén Resort Marina

**Be a pioneer of investment in the area
and turns your vision into a life
of unique experiences;
life, relaxation, gastronomy,
entertainment, sailing and exclusivity.**

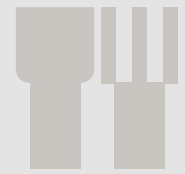


Location



PRG.

YUC.



Residential



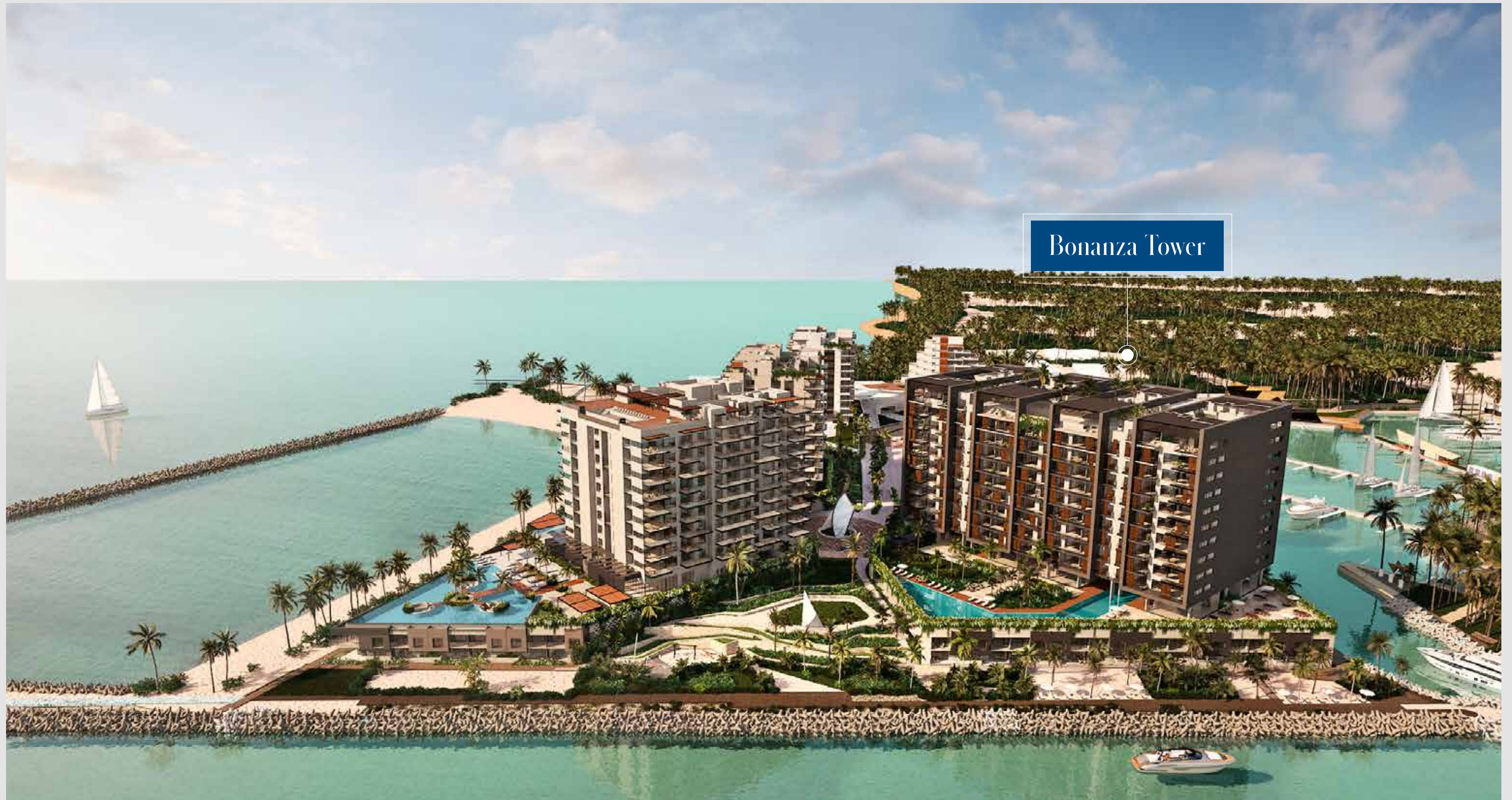
PRG.

YUC.

Bonanza Tower







Bonanza Tower

Bonanza Tower is the perfect combination of serenity and tranquility facing the impressive emerald sea, witness of the best sunsets in the Yucatan Peninsula.

An aerial photograph of a resort complex built on a narrow strip of land. The resort features several multi-story buildings, swimming pools, and a marina with numerous sailboats. The water is a vibrant turquoise color. A white callout box with a dark border and the text "Bonanza Tower" is positioned in the upper middle of the image, with a thin white line pointing to a specific building in the resort.

Bonanza Tower

PRG.

YUC.

More than 40 amenities
within the project
make a big difference
for your investment





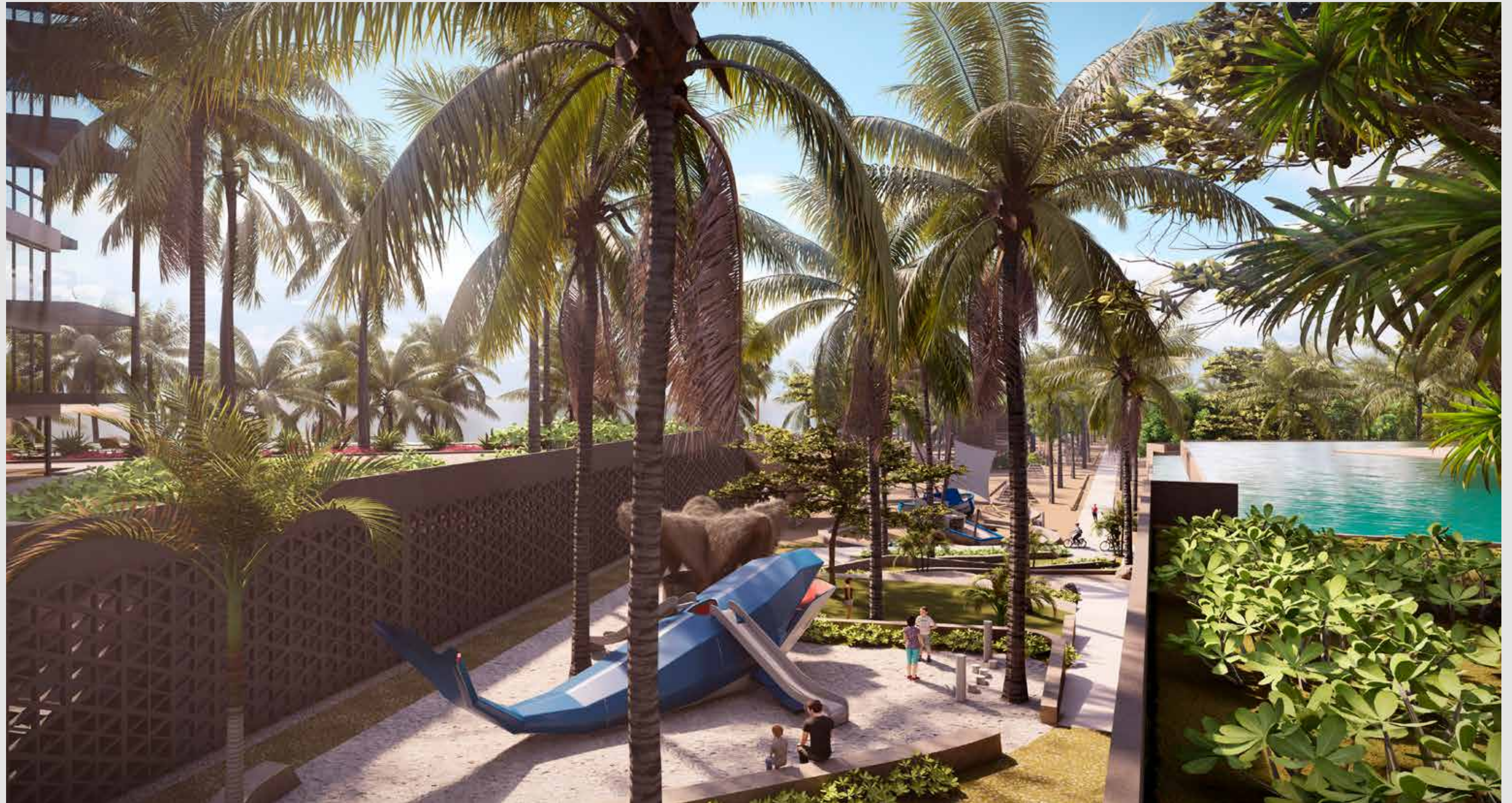
Exclusive Sidewalk





Shared amenities located on the second level.





-
- *Lobby*
 - *Swimming pool*
 - *Snack Bar*
 - *Events Room*
 - *Meeting Room*
 - *Kid's club*
 - *Junior's Club*
 - *Senior's Club*
 - *Business Club*







PRG.

YUC.

A project with everything you need
for a life of luxury, rest
and first class nautical experiences in
Progreso, Yucatán.



PRG.

YUC.



173 Units
Condos from 2 & 3 Bedrooms
Penthouse & Villas







PRG.

YUC.

Units Type



Type A2

• Interios Area	896.95 ft ²
• Balcony	237.34 ft ²
• Parking	134.54 ft ²

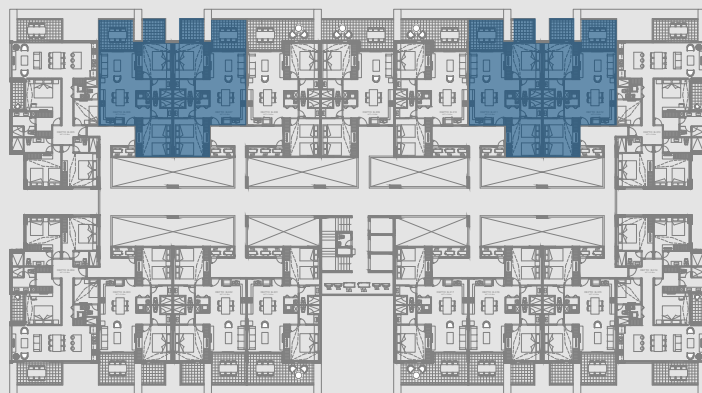
Total	11268.84 ft²
--------------	--------------------------------

• Bedroom	2
• Badroom	2
• Den	0
• Parking spots	1

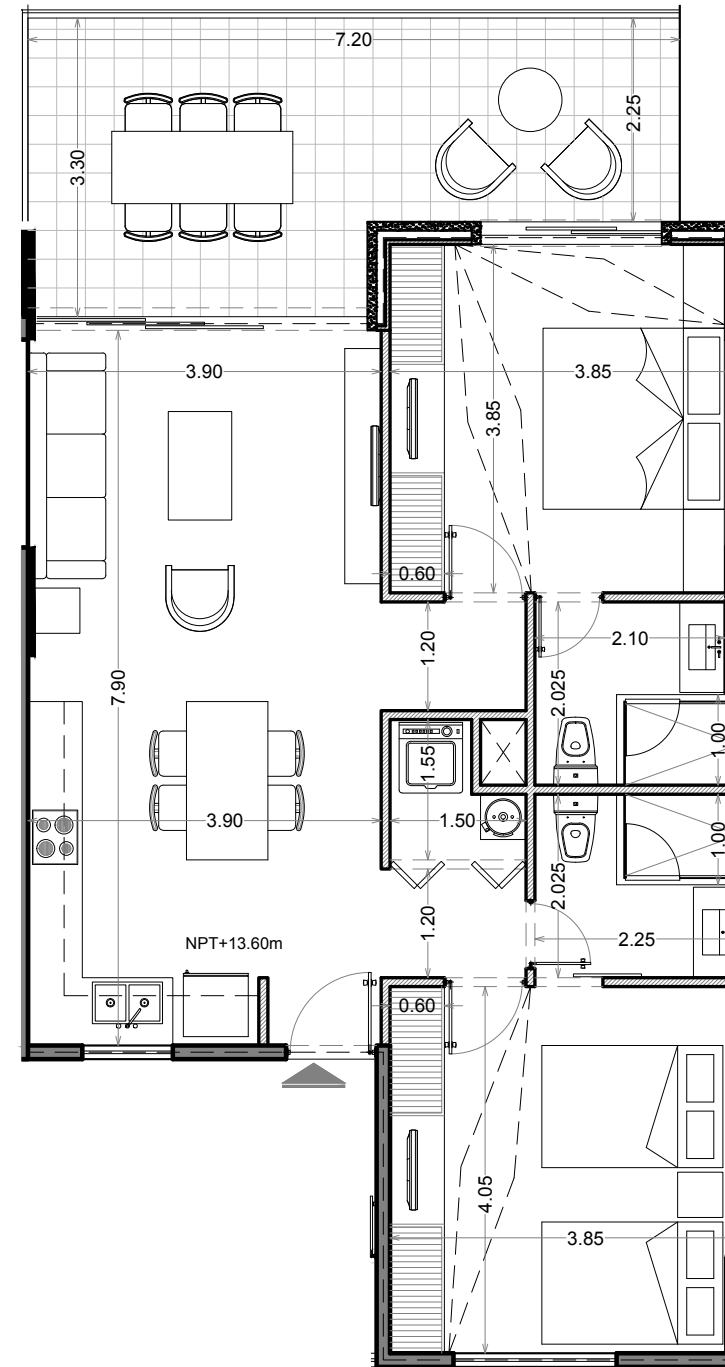
Bonanza Tower

Ocean View

Ocean - Channel View



Marina View



Type C2

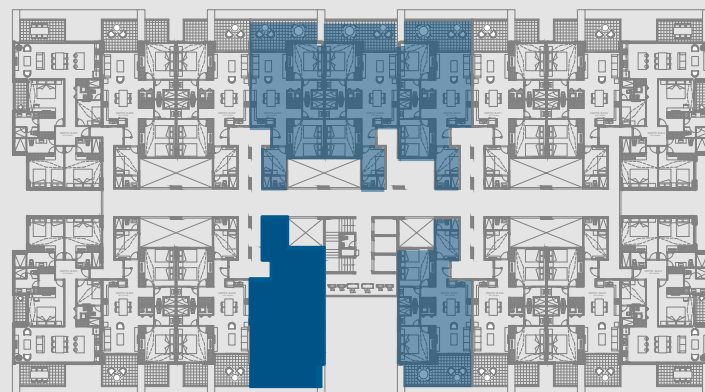
• Interior Area	1071.87 ft ²
• Balcony	235.94 ft ²
• Parking	269.09 ft ²

Total	1576.91 ft²
--------------	-------------------------------

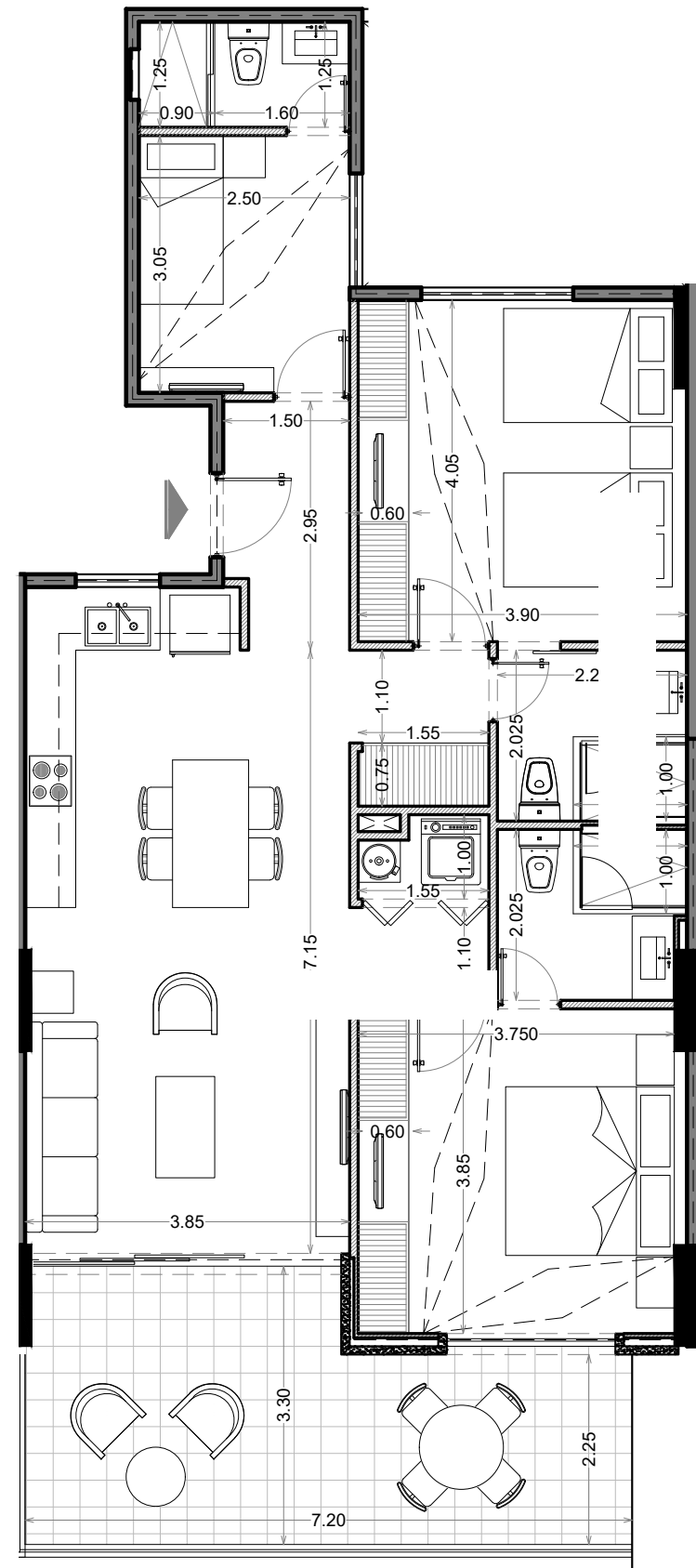
• Bedrooms	2
• Bathrooms	3
• Den	1
• Parking spots	2

Bonanza Tower

Ocean View



Marina View



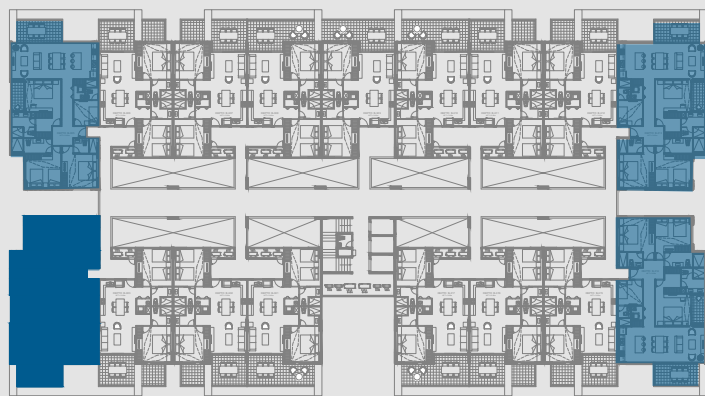
Type D1

• Interior Area	1508.34 ft ²
• Balcony	187.29 ft ²
• Parking	269.09 ft ²
Total	1964.73 ft²
• Bedrooms	4
• Bathrooms	4
• Den	1
• Parking spots	2

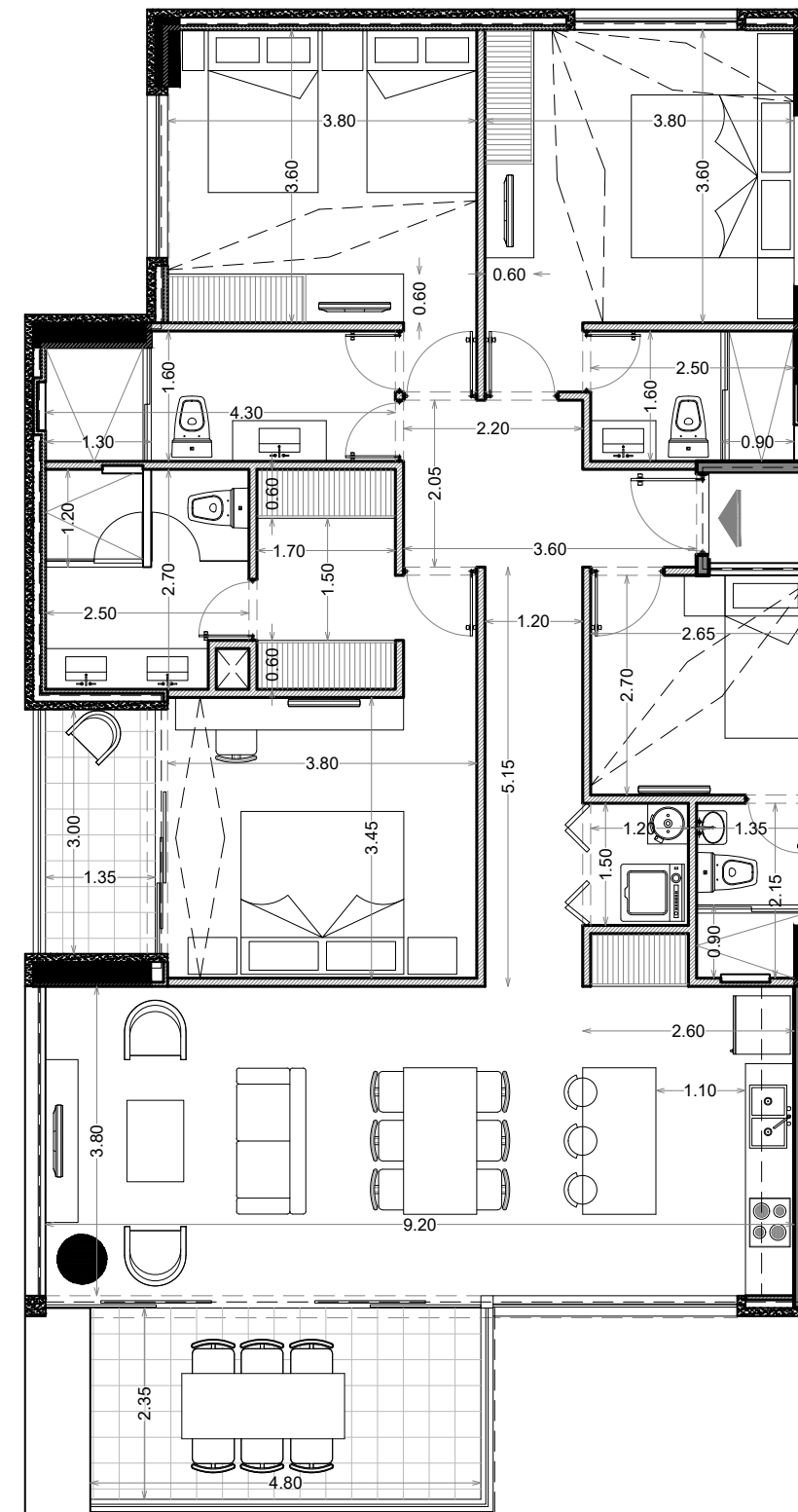
Bonanza Tower

Ocean View

Ocean - Channel View

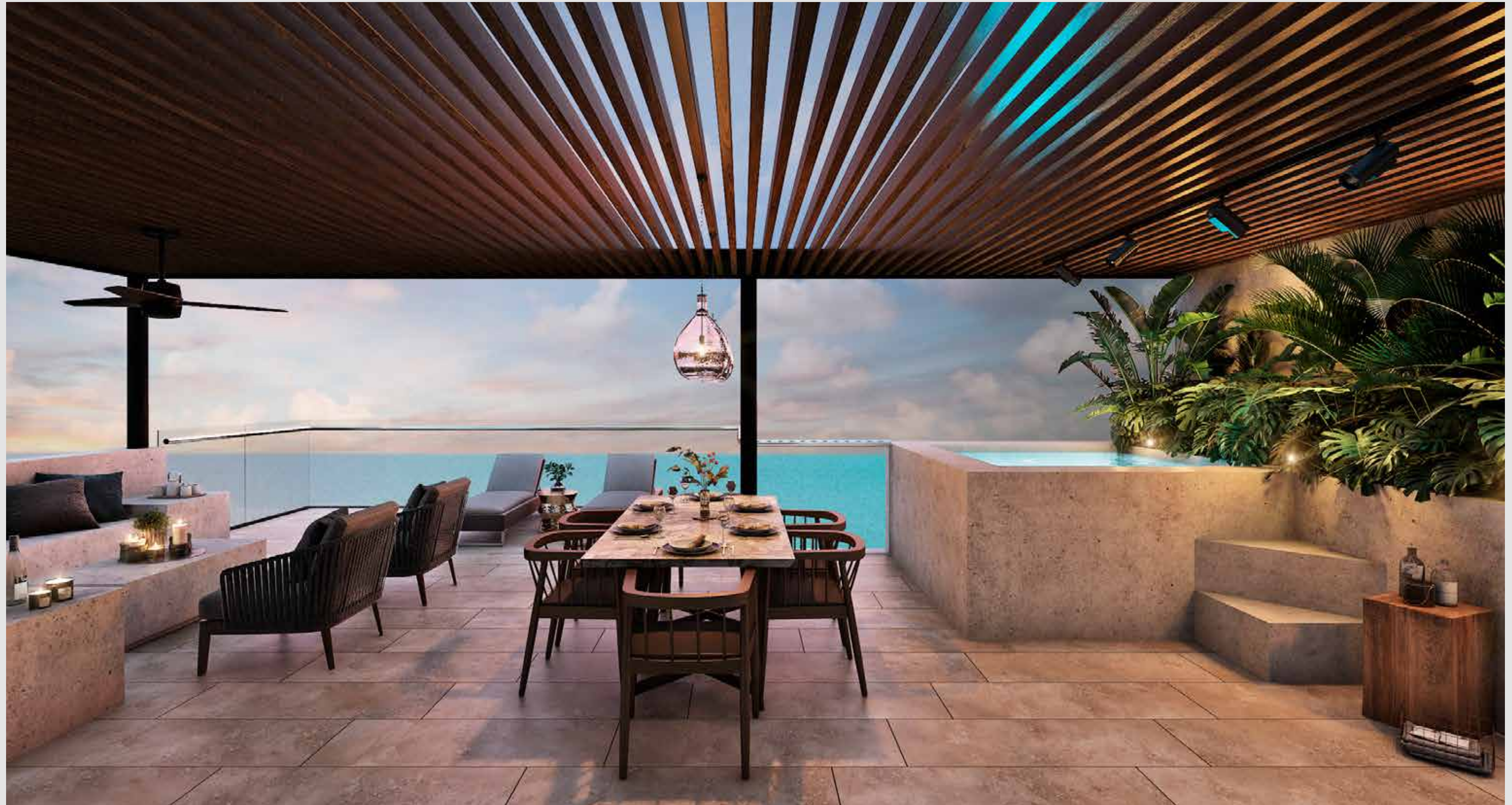


Marina View



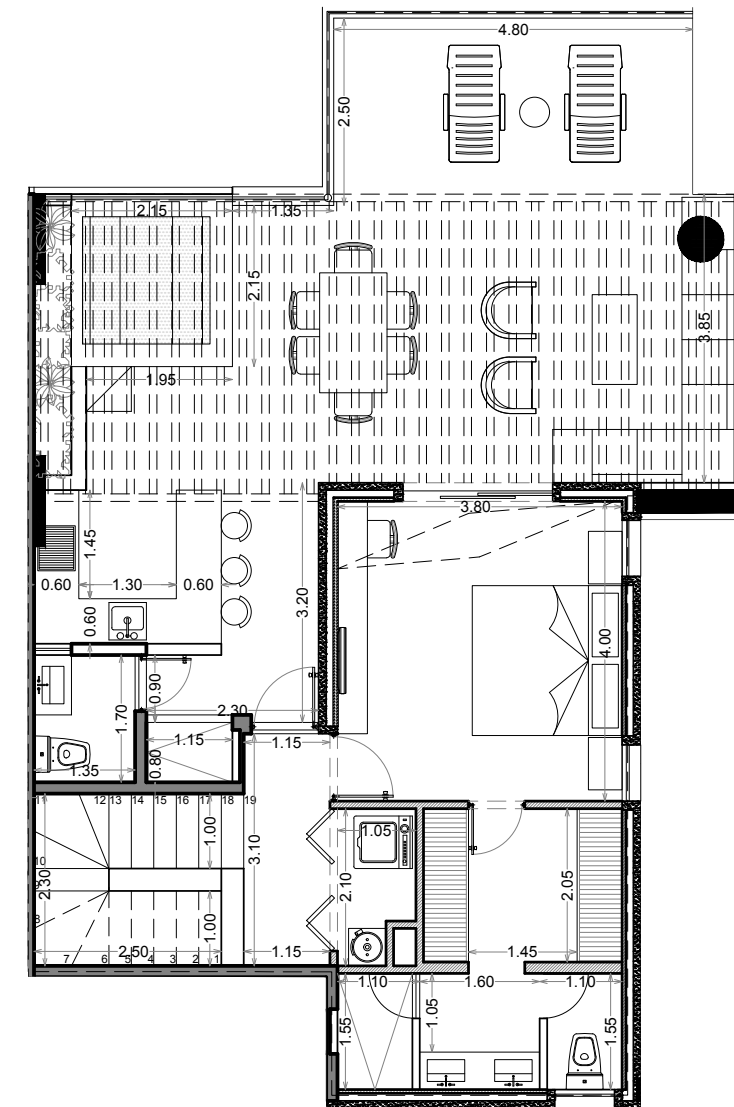
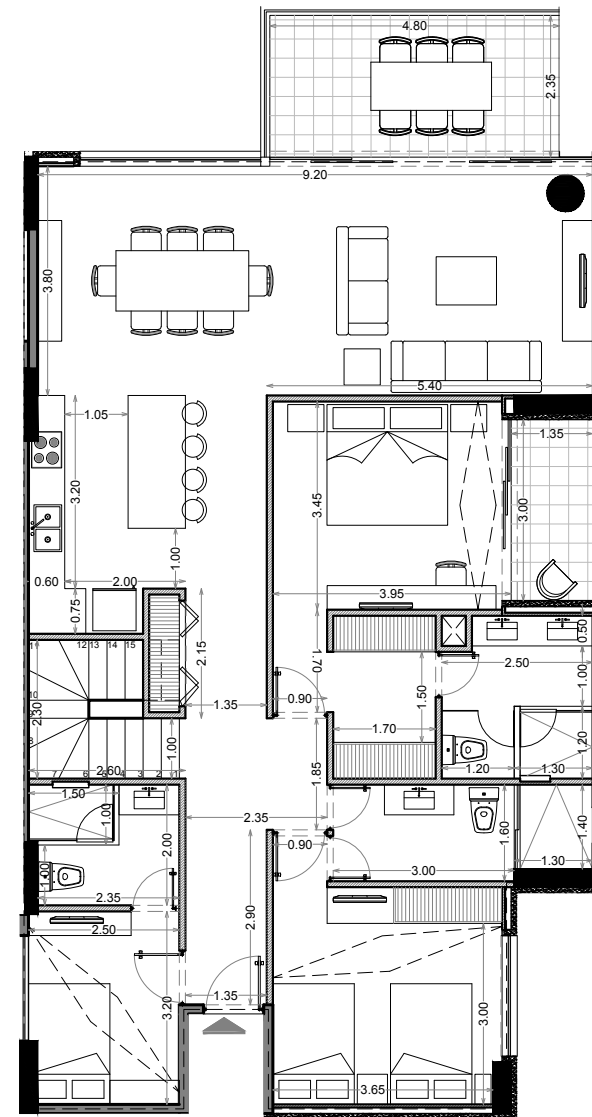
Penthouse.





Type D-PH

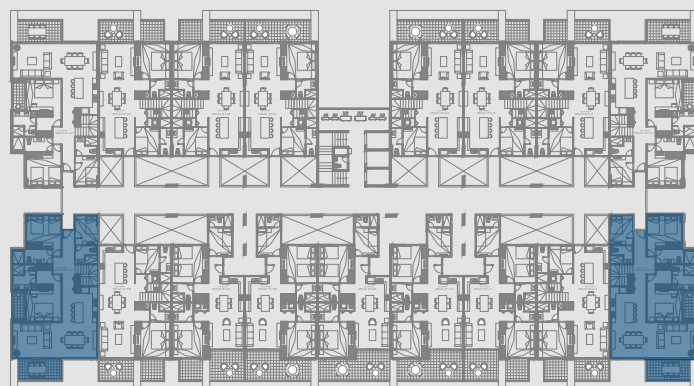
• Interior Area	2009.83 m ²
• Balcony	187.29 m ²
• Sundeck	667.47 m ²
• Parking	37.50 m ²
Total	3268.24 ft²
• Bedrooms	4
• Bathrooms	4.5
• Den	1
• Parking spots	3



Bonanza Tower

Ocean view

Ocean - Channel View



Marina view

Tipo C-PH

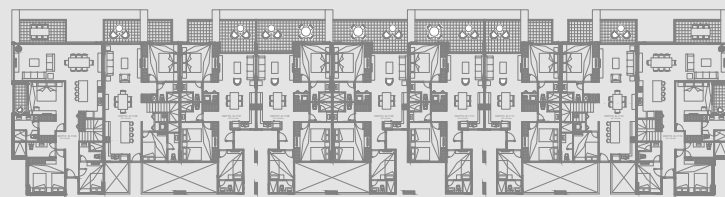
• Interior Area	1738.80 ft ²
• Balcony	144.02 ft ²
• Sundeck	557.03 ft ²
• Parking	403.64 ft ²

Total	2872.99 m²
--------------	------------------------------

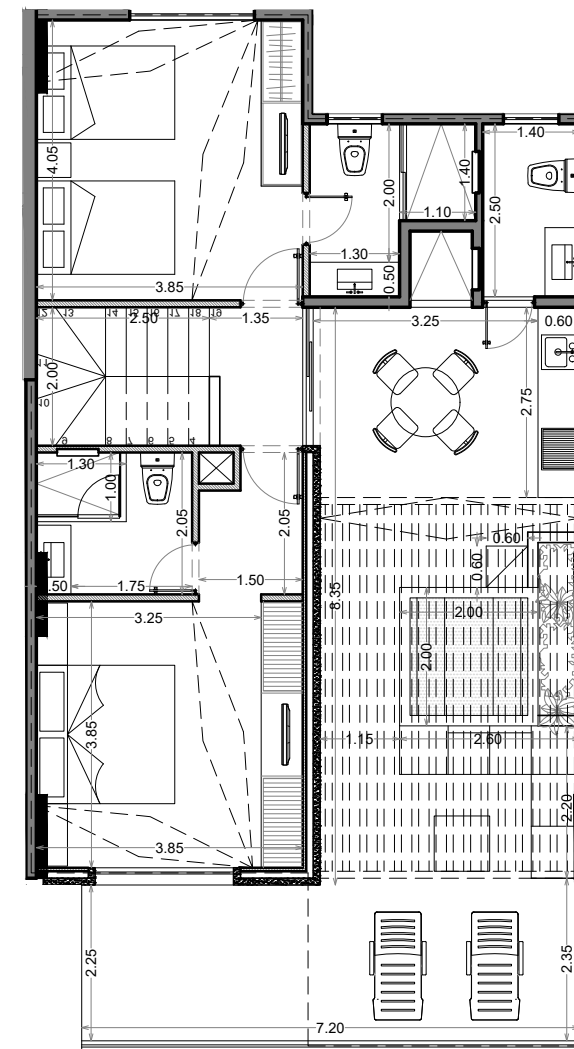
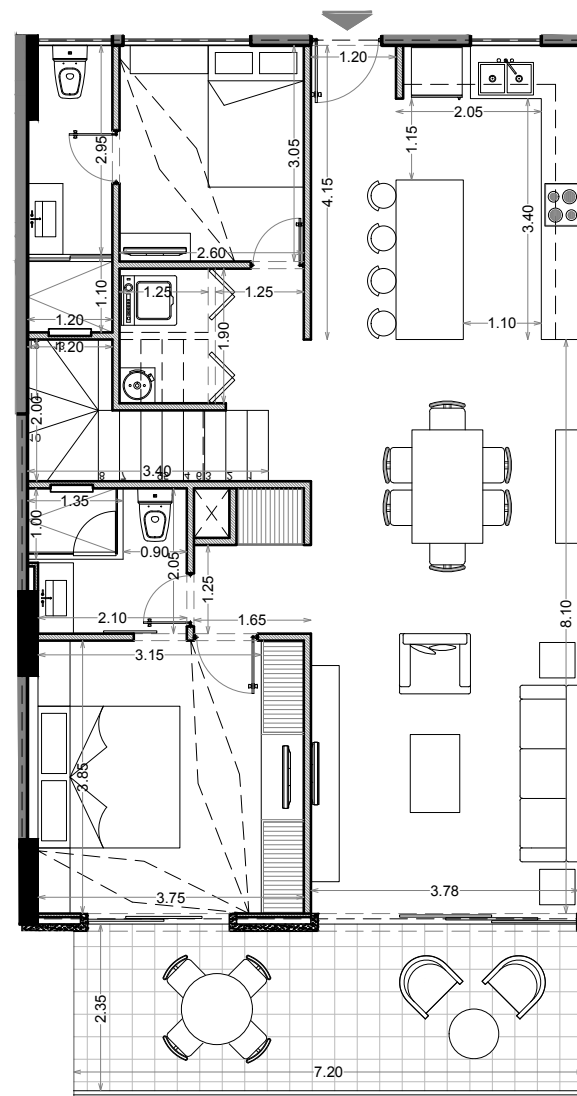
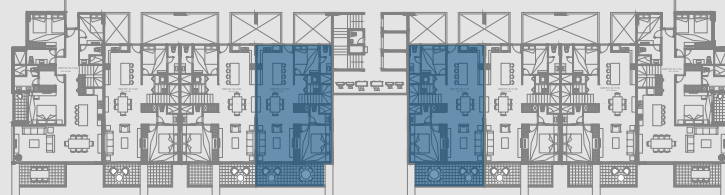
• Bedrooms	4
• Bathrooms	4.5
• Den	1
• Parking spots	3

Bonanza Tower

Ocean view



Marina view



PRG.

YUC.

SALES PRESENTATION

Villas.





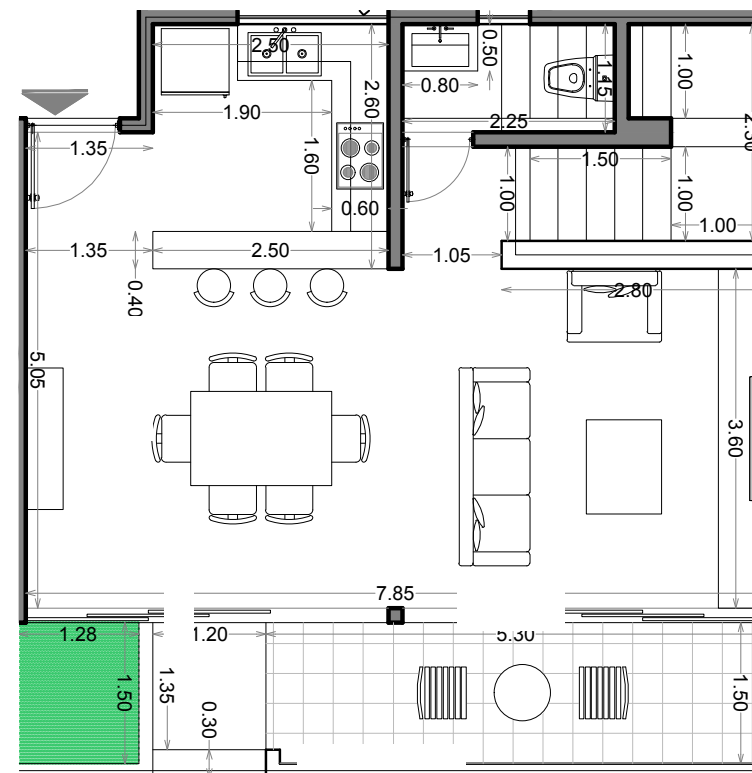
Villa A

• Interior Area GF	1176.06 ft ²
• Balcony	211.83 ft ²
• Parking	269.09 ft ²

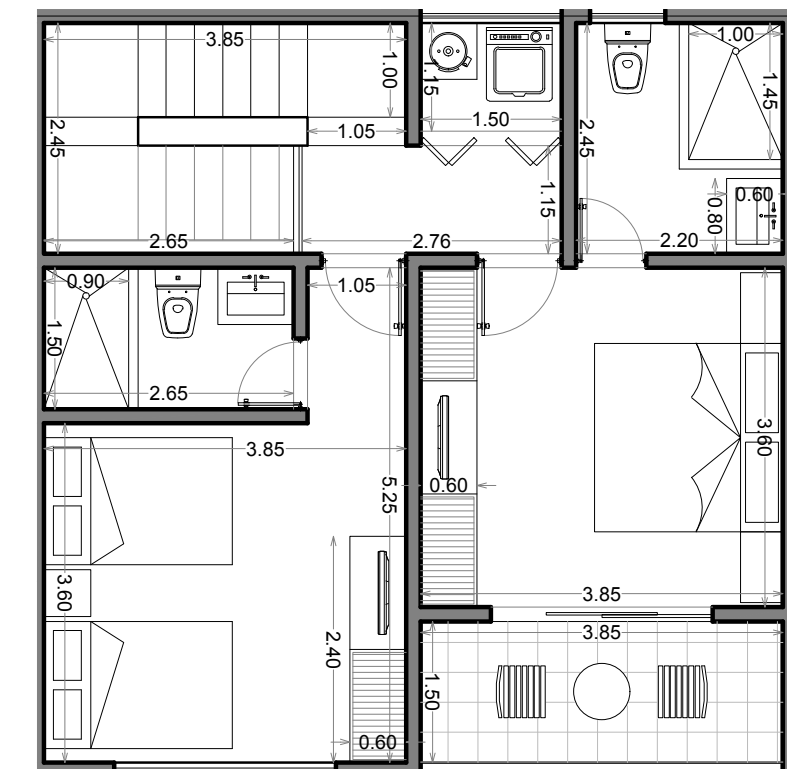
Total	1656.99 ft²
--------------	-------------------------------

• Bedrooms	2
• Bathrooms	2.5
• Den	0
• Parking spots	2

Ground Floor



First Floor



Bonanza Tower

Ocean view

Ocean - Channel View



Marina view

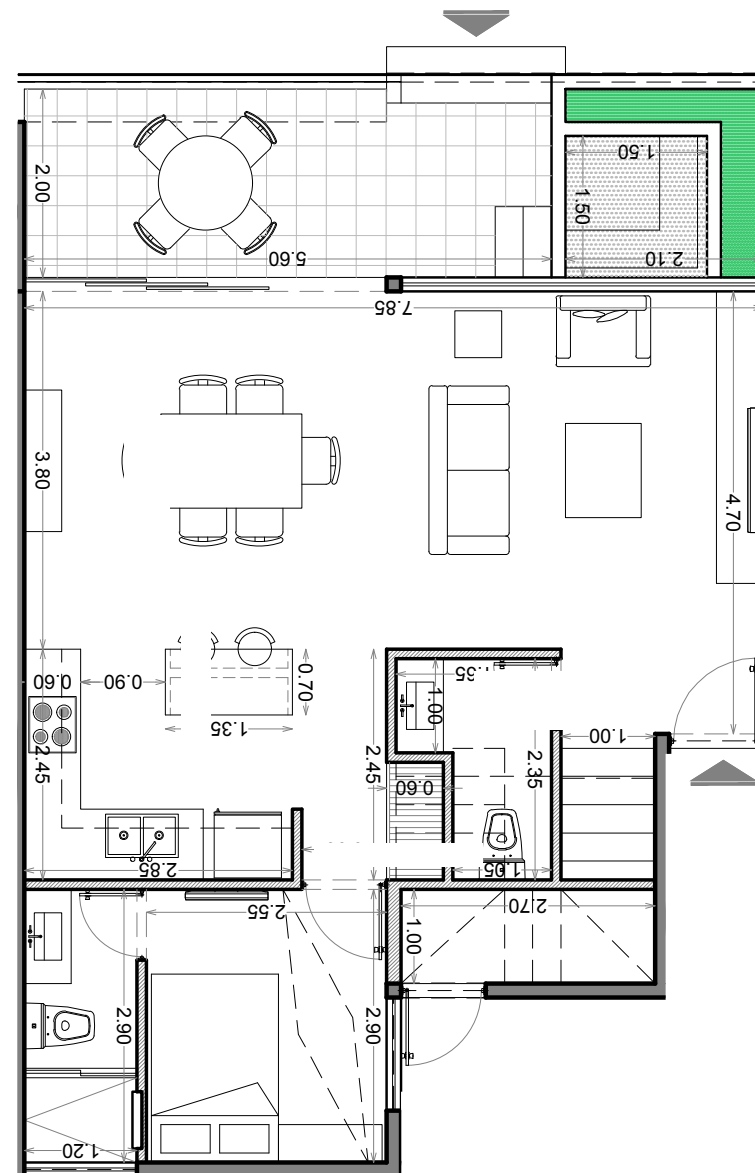
Villa B

• Interior Area GF	1410.61 ft ²
• Balcony	254.88 ft ²
• Parking	269.09 ft ²

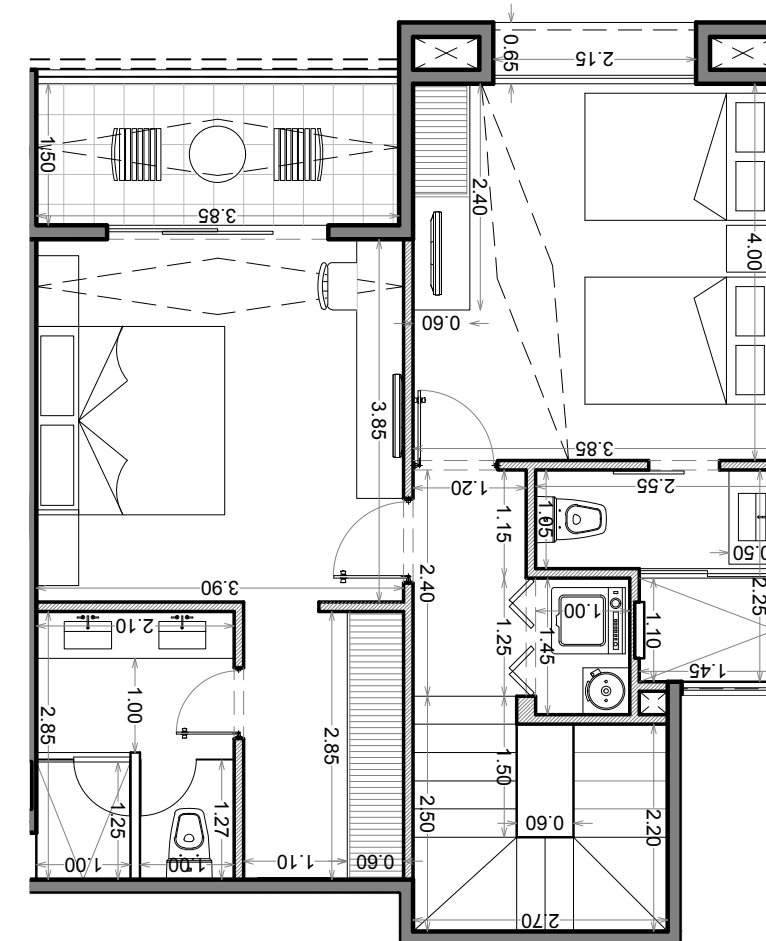
Total	1934.59 ft²
--------------	-------------------------------

• Bedrooms	2
• Bathrooms	3.5
• Den	1
• Parking spots	2

Ground Floor

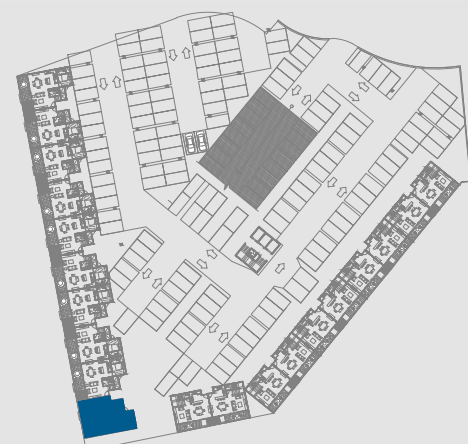


First Floor



Bonanza Tower

Ocean view



Marina view



360°
Surrounded by water

PRG.

YUC.

Invest in Yucatán. Invest in Progreso



PRG.

YUC.

Invest in: Yucalpetén Resort Marina



PRG.

YUC.

SIMCA

